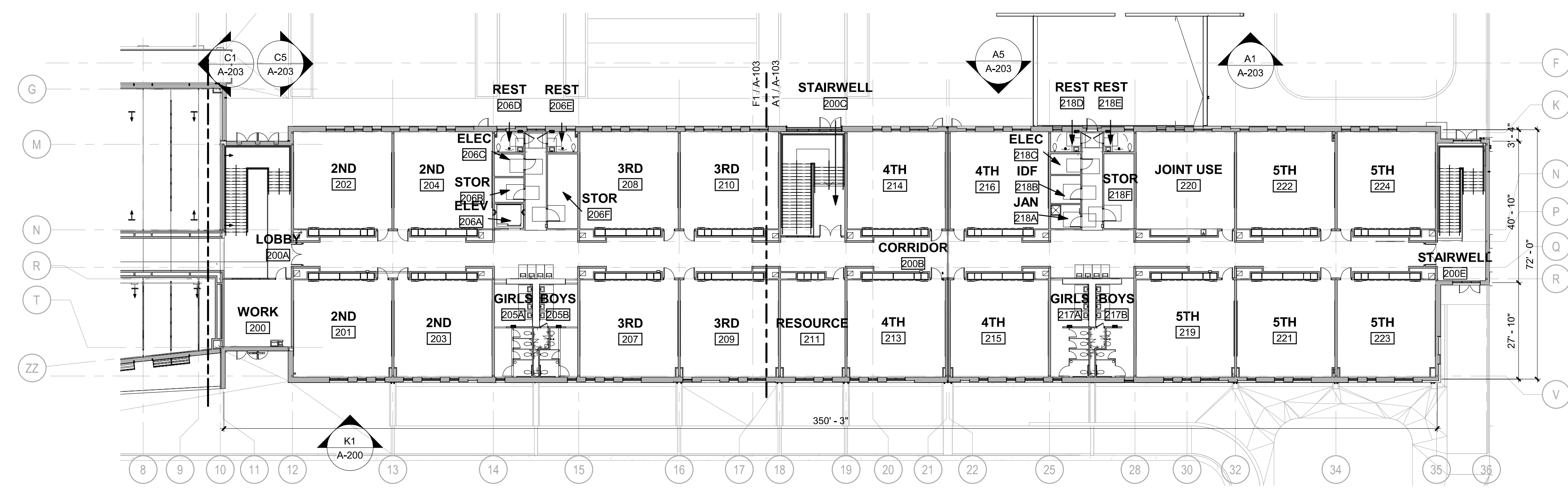
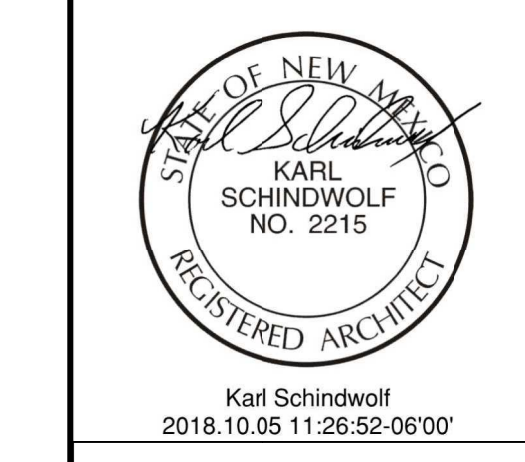
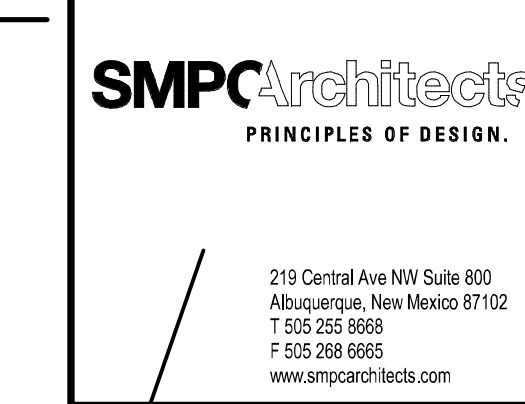
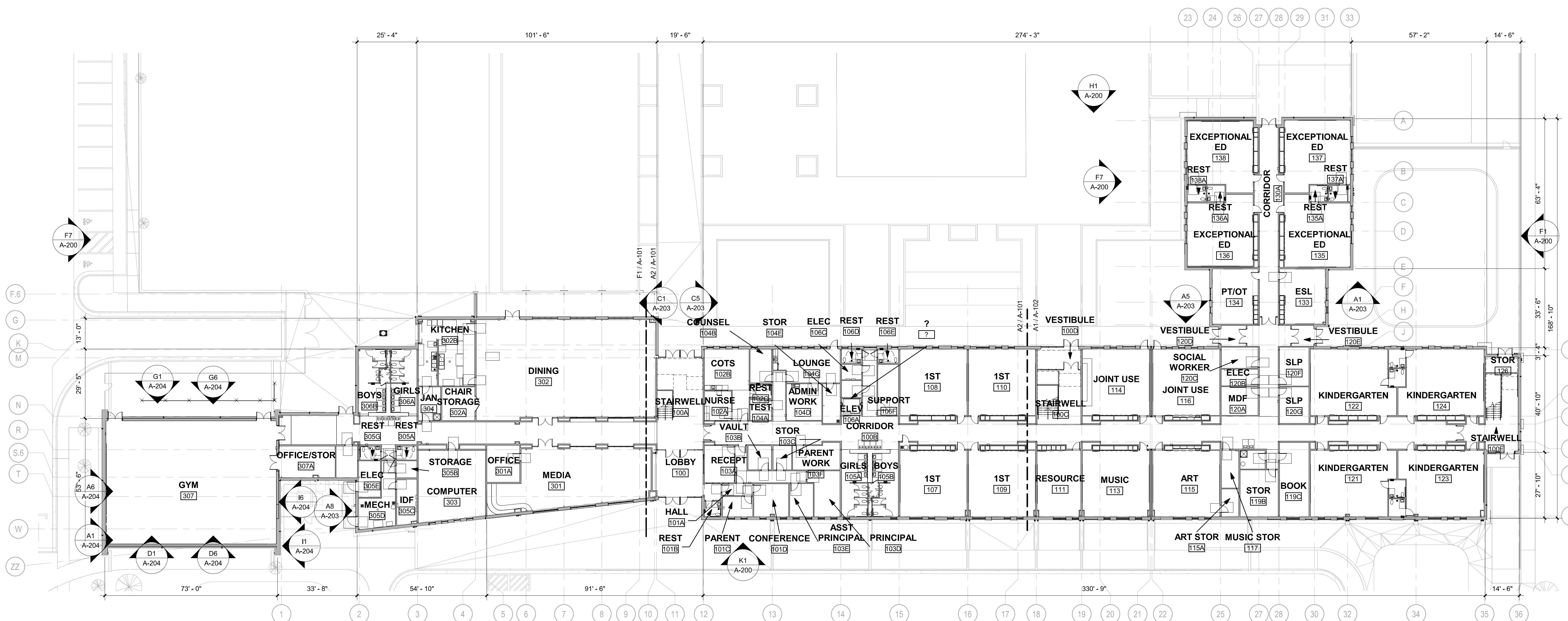
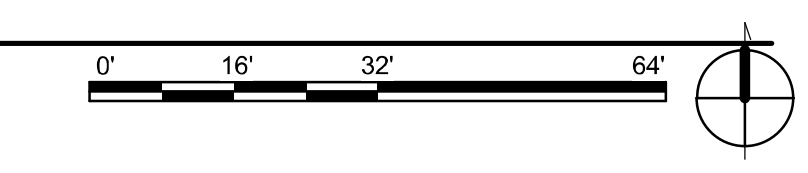


GENERAL NOTES

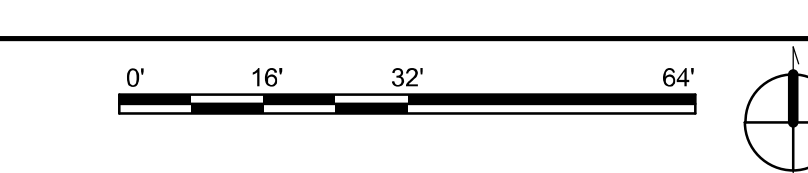
1. IF THIS SHEET IS NOT 30" X 42", THEN THE DRAWINGS ON IT ARE NOT TO SCALE.



J5 2ND FLOOR PLAN - OVERALL
3/64" = 1'-0"



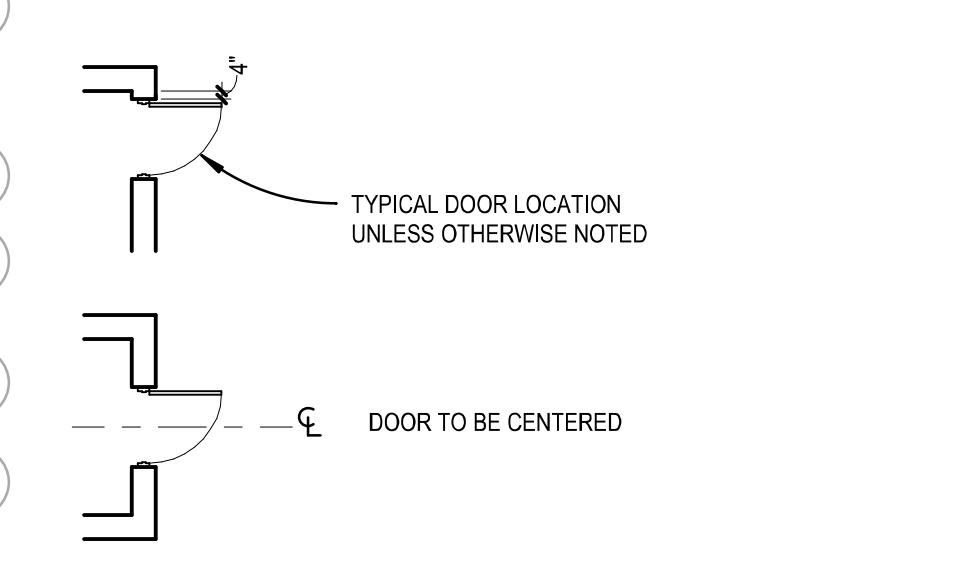
D1 1ST FLOOR PLAN - OVERALL
3/64" = 1'-0"



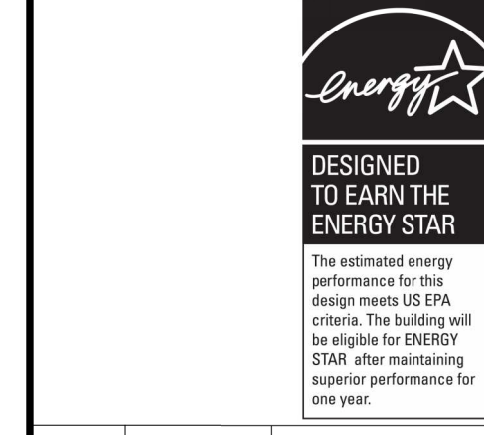
LEGEND CONSTRUCTION PLAN

- 11 PARTITION TYPE, REFER TO C3/A-511
- 100 DOOR NUMBER, REFER TO THE DOOR SCHEDULE ON A-601
- 00.000.N REFERENCE KEYNOTE
- 7 SHEET KEYNOTE
- 1 FRAME OR WINDOW TYPE, REFER TO A-602
- 1 HR RATED WALL
- 2 HR RATED WALL

LEGEND DIMENSION PLAN



DEL NORTE ES REPLACEMENT
CONSTRUCTION DOCUMENTS
 2701 N Garden Ave
 Roswell, NM 86201



NO	DATE	DESCRIPTION
1	2018-09-24	Re-issue
DATE:	2018-09-27	
PROJECT #:	17026	
PSFA PROJECT #:	P16-003	
DRAWN BY:	JET/ANNB	
CHK BY:	ADM	

Copyright
 SMPC Architects © 2018
 These documents were prepared for this specific project only. SMPC Architects' liability is limited to this specific project, and does not extend to reuse of these documents for other projects.

SEE COVER SHEET FOR BID LOT DESCRIPTIONS.

FLOOR PLANS - OVERALL

A-100
SHEET OF

GENERAL NOTES

- IF THIS SHEET IS NOT 30" X 42", THEN THE DRAWINGS ON IT ARE NOT TO SCALE.

SMPC Architects
PRINCIPLES OF DESIGN.

219 Central Ave NW Suite 803
Albuquerque, New Mexico 87102
T: 505 252 8668
F: 505 258 8665
www.smpcarchitects.com

McCLAIN + YU
ARCHITECTURE & DESIGN

2009 Ridgeway Dr. SE
Albuquerque, NM 87108
(505) 256-2142
www.mcclain-yu.com

STATE OF NEW MEXICO
KARL SCHINDWOLF
NO. 2215
REGISTERED ARCHITECT

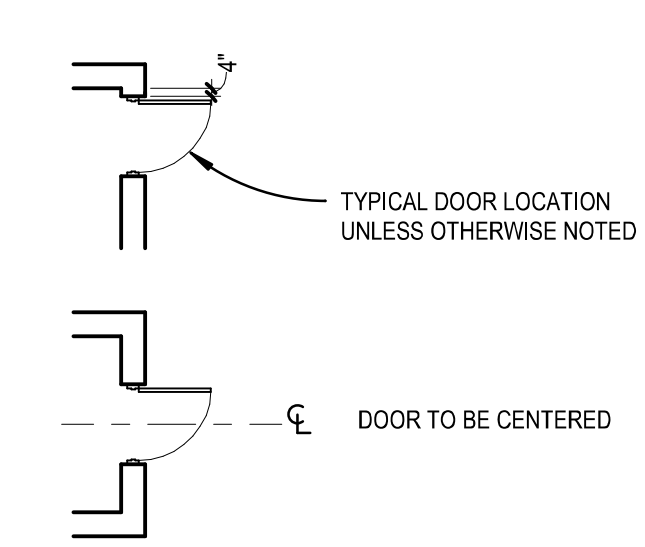
Karl Schindwolf
2018.10.05.11.28.10.06'00"

REFERENCE KEYNOTES

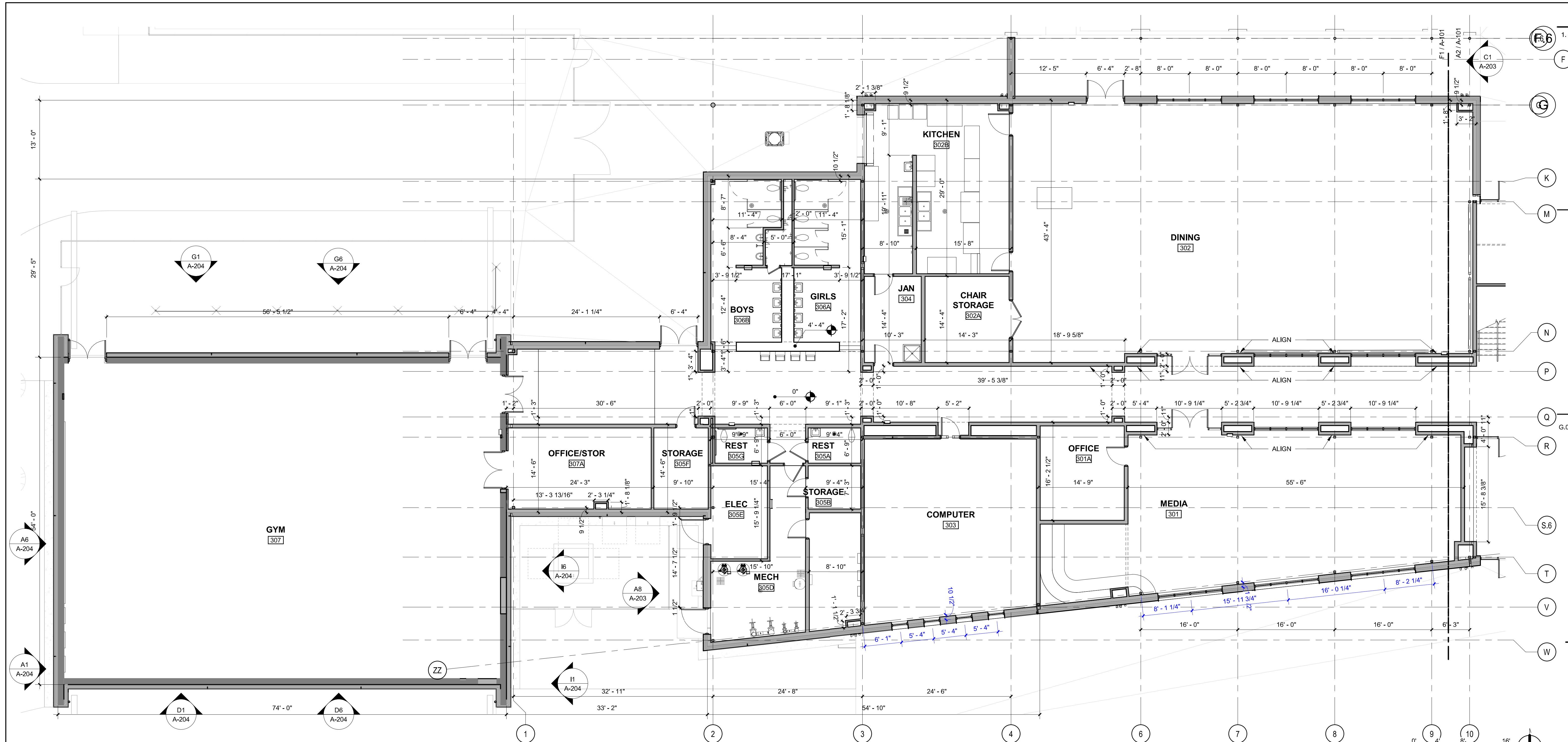
SHEET KEYNOTES

- G.04 EXPANSION JOIN IN GYPSUM. REFER TO G5/A-512

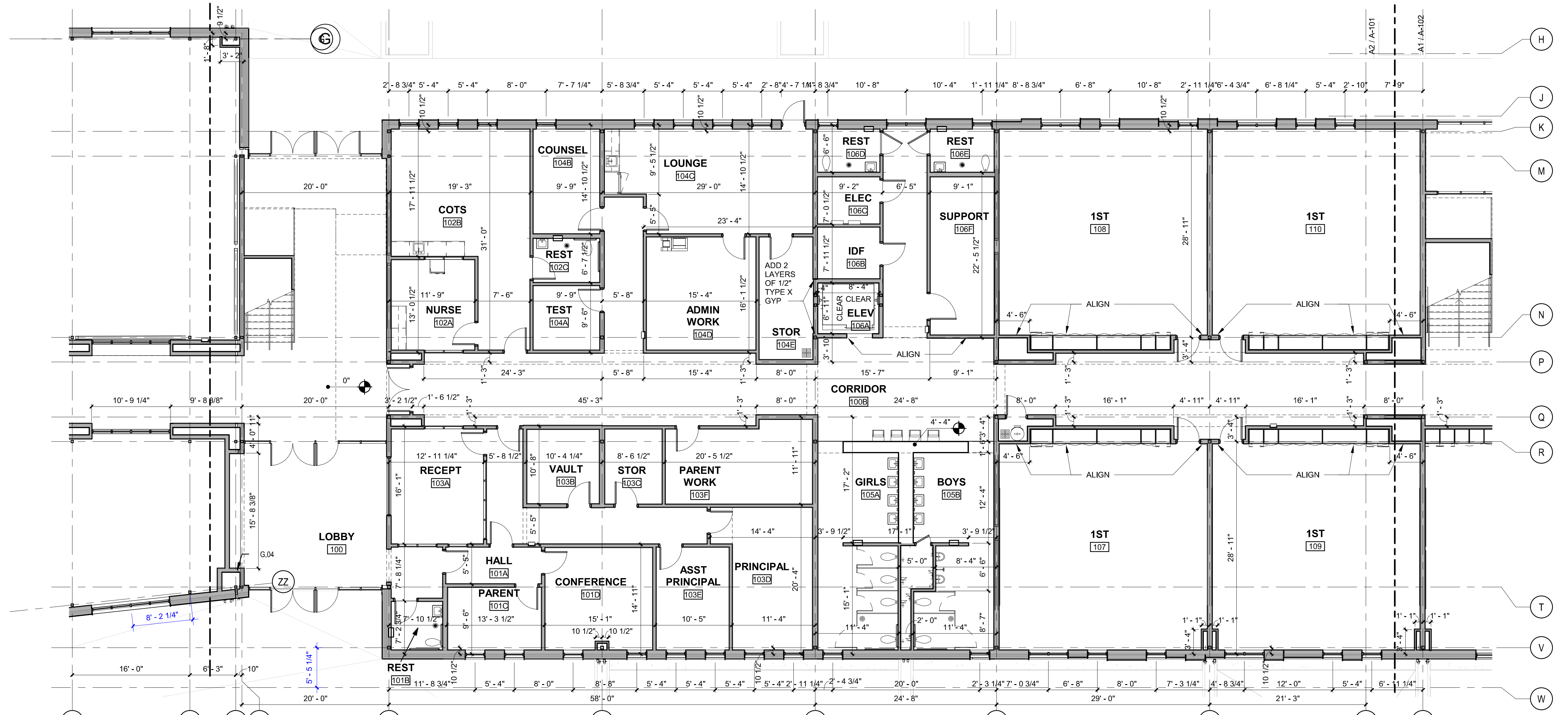
LEGEND DIMENSION PLAN



F1 1ST FLOOR PLAN - AREA 1
1/8" = 1'-0"

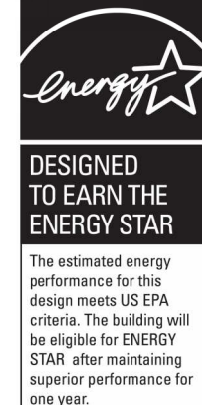


A2 1ST FLOOR PLAN - AREA 2
1/8" = 1'-0"



DEL NORTE ES REPLACEMENT
CONSTRUCTION DOCUMENTS

2701 N Garden Ave
Roswell, NM 86201



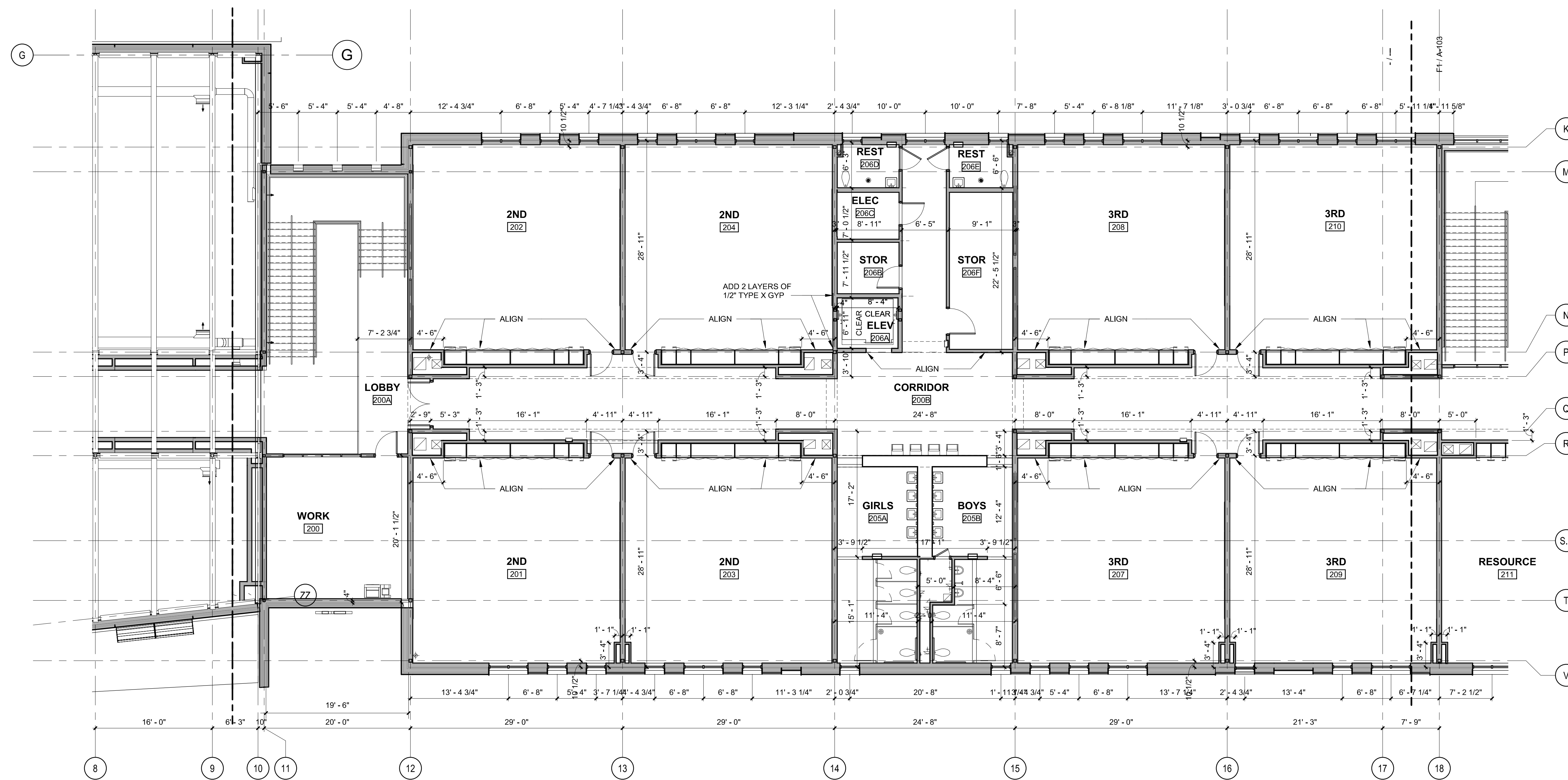
NO	DATE	DESCRIPTION
1	2018-09-24	Re-issue
DATE	2018-09-27	
PROJECT #	17026	
PSFA PROJECT #	P16-003	
DRAWN BY	JET/ANNB	
CHK BY	ADM	

Copyright
SMPC Architects © 2018

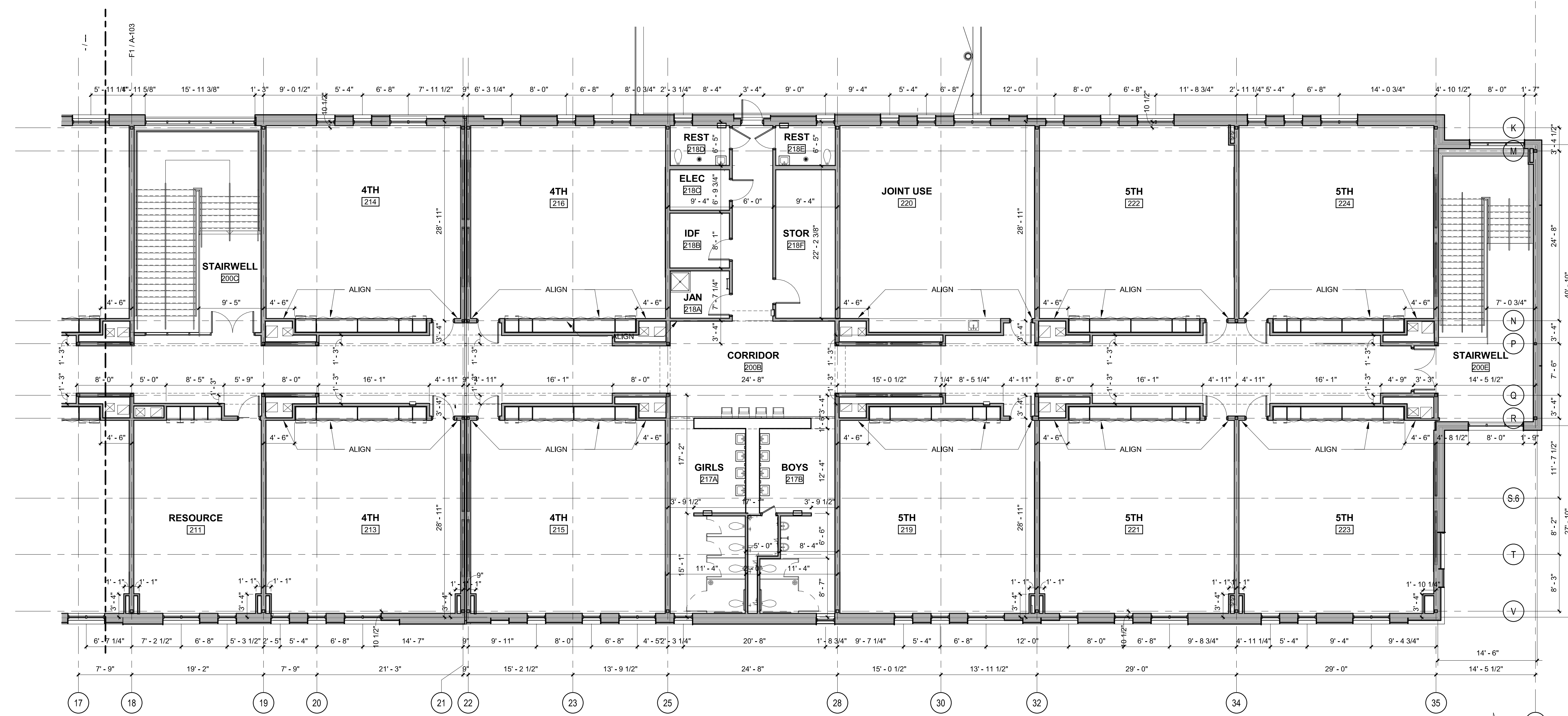
These documents were prepared for this specific project only. SMPC Architects' liability is limited to this specific project, and does not extend to reuse of these documents for other projects.

SEE COVER SHEET FOR BID LOT DESCRIPTIONS.

1ST FLOOR DIMENSION PLANS - AREA 1+2



F1 2ND FLOOR PLAN - AREA 2
1/8" = 1'-0"



A1 2ND FLOOR PLAN - AREA 3
1/8" = 1'-0"

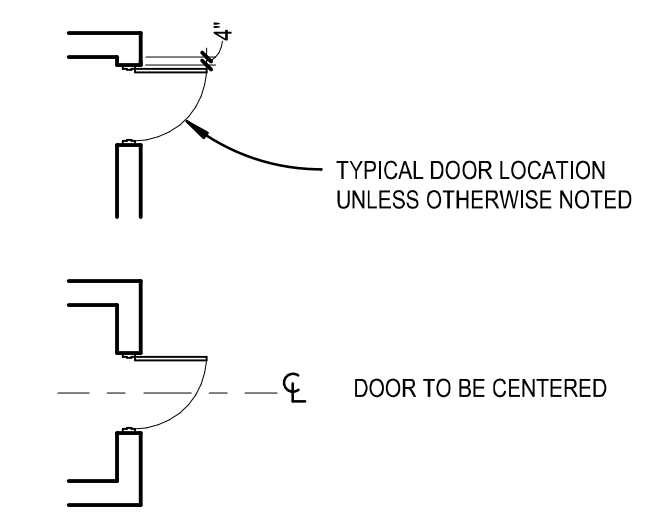
GENERAL NOTES

1. IF THIS SHEET IS NOT 30" X 42", THEN THE DRAWINGS ON IT ARE NOT TO SCALE.

REFERENCE KEYNOTES

SHEET KEYNOTES

LEGEND DIMENSION PLAN



SMPC Architects
PRINCIPLES OF DESIGN.

219 Carroll Ave NW Suite 803
Albuquerque, New Mexico 87102
T: 505 252 8668
F: 505 258 8665
www.smpcarchitects.com

McCLAIN + YU
ARCHITECTURE & DESIGN

2009 Ridgewood Dr. SE
Albuquerque, NM 87108
(505) 256-2142
www.mcclain-yu.com

STATE OF NEW MEXICO
KARL SCHINDWOLF
NO. 2215
REGISTERED ARCHITECT

Karl Schindwolf
2018.10.05 11:28:47-0600'

DEL NORTE ES REPLACEMENT
CONSTRUCTION DOCUMENTS

2701 N Garden Ave
Roswell, NM 86201

energy
DESIGNED TO EARN THE ENERGY STAR

The estimated energy performance in this design meets US EPA criteria. The building will be eligible for ENERGY STAR after maintaining superior performance for one year.

NO	DATE	DESCRIPTION
1	2018-09-24	Re-issue
DATE:	2018-09-27	
PROJECT #:	17026	
PSFA PROJECT #:	P16-003	
DRAWN BY:	JET/ANNB	
CHD BY:	ADM	

Copyright SMPC Architects © 2018
These documents were prepared for this specific project only. SMPC Architects' liability is limited to this specific project, and does not extend to review of these documents for other projects.

2ND FLOOR DIMENSION PLANS - AREA 2+3

GENERAL NOTES

1. IF THIS SHEET IS NOT 30" X 42", THEN THE DRAWINGS ON IT ARE NOT TO SCALE.

SMPC Architects
PRINCIPLES OF DESIGN.

219 Carroll Ave NW Suite 803
Albuquerque, New Mexico 87102
T 505 252 8668
F 505 268 8665
www.smpcarchitects.com

McCLAIN + YU
ARCHITECTURE & DESIGN

2009 Ridgewood Dr. SE
Albuquerque, NM 87108
(505) 266-2142
www.mcclain-yu.com

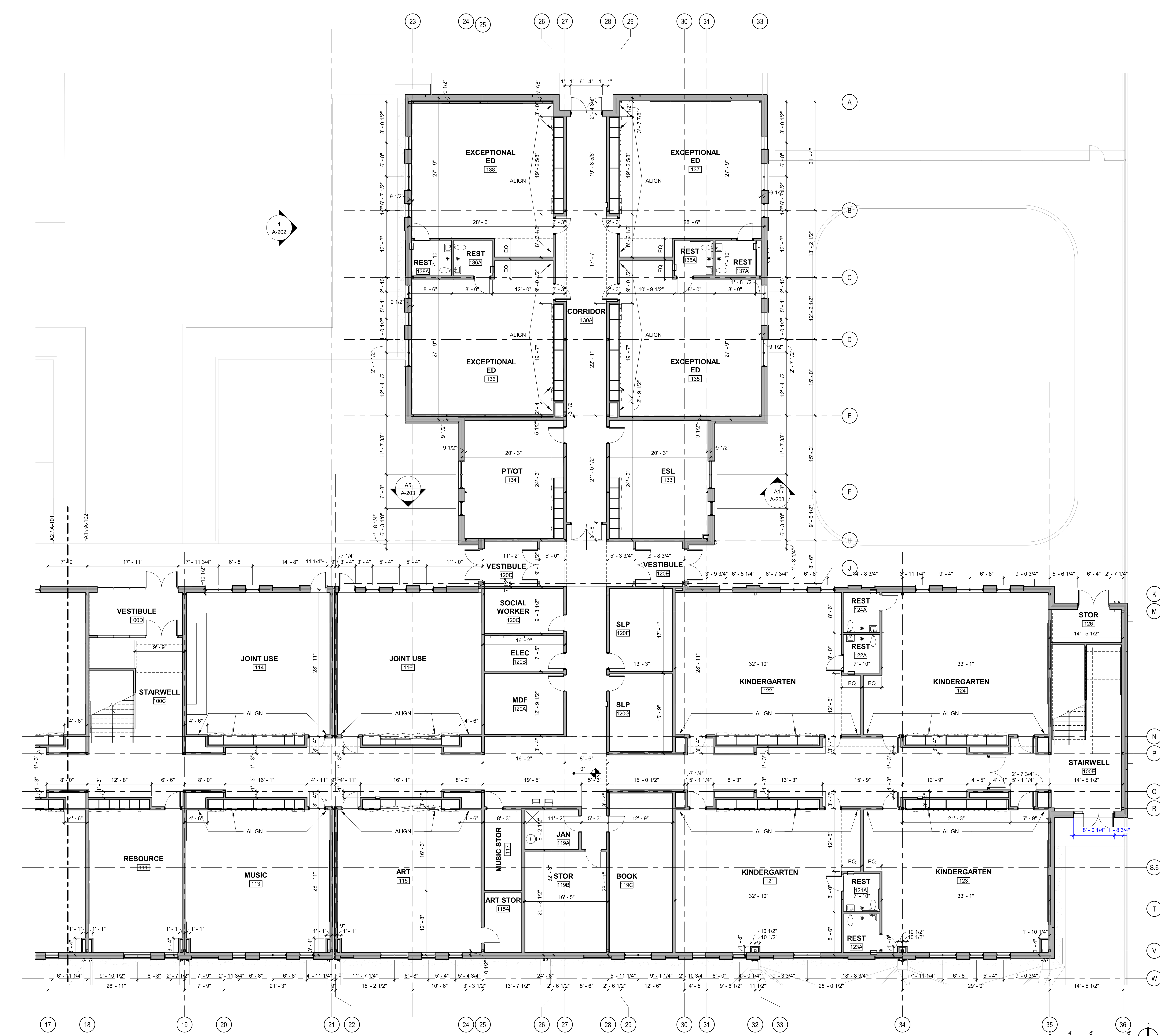
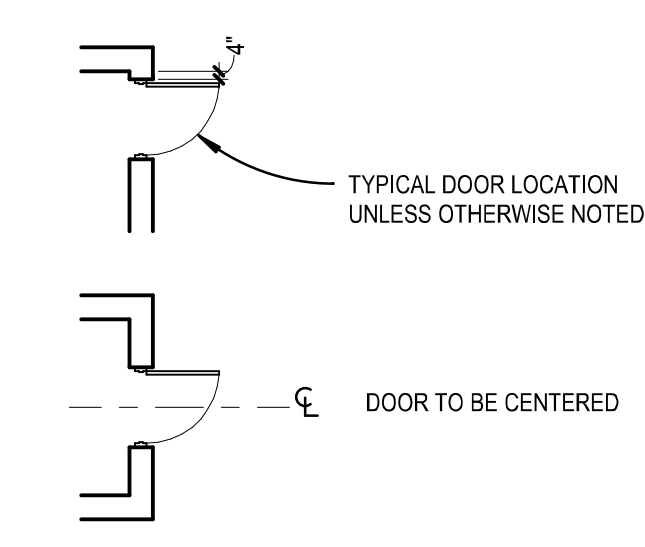
STATE OF NEW MEXICO
KARL SCHINDWOLF
NO. 2215
REGISTERED ARCHITECT

Karl Schindwolf
2016.10.05 11:25:29-06'00"

REFERENCE KEYNOTES

SHEET KEYNOTES

LEGEND DIMENSION PLAN



A1 1ST FLOOR PLAN - AREA 3+4
1/8" = 1'-0"

DEL NORTE ES REPLACEMENT
CONSTRUCTION DOCUMENTS

2701 N Garden Ave
Roswell, NM 86201

DESIGNED TO EARN THE ENERGY STAR

The estimated energy performance of this design meets US EPA criteria. The building must be eligible for ENERGY STAR after maintaining superior performance for one year.

NO	DATE	DESCRIPTION
1	2018-09-24	Re-issue
DATE	2018-09-27	
PROJECT #	17026	
PSFA PROJECT #	P16-003	
DRAWN BY	JET/ANNB	
CHK BY	ADM	

Copyright SMPC Architects © 2018
These documents were prepared for this specific project only. SMPC Architects' liability is limited to this specific project, and does not extend to review of these documents for other projects.

1ST FLOOR DIMENSION PLANS - AREA 3+4